



俊川棚架設備有限公司
GENUINE TREASURE ACCESS AND SCAFFOLDING LTD

Your Good Partner
in Access Scaffolding

ROUNDER

ABOUT US	
公司簡介	4
SCAFFOLDING SERVICE	
金屬棚架業務	6
PRODUCTS INTRODUCTION	
產品介紹	11
APPLICATIONS	
工程應用	14
SCAFFOLD PARTS	
標準部件	21
GT ROUNDER CAPACITY	
棚架承載力	25
JOB REFERENCES	
工程項目	27

Genuine Treasure Access and Scaffolding Limited (HKCIC registered contractor number: R008578), is under the group of Genuine Treasure. The company is a contractor and supplier, specialized in letting and erection/dismantle of metal scaffolding equipment. In addition, our business also includes sales of various types of construction metal formwork and aluminium formwork, hardware accessories and materials.

Over the years, the company has constantly strived to make improvements with the aim to further strengthen its standards. We fully understand the challenges and rapidly changing market situation that our clients are facing. **Be A Customer-Centric Partner** is our corporate mission, focus in providing safe, reliable, professional, high quality products and services that are with the most cost effective, efficient and competitive solutions to our esteemed clients. We offer a wide-range of scaffolding engineering services, including: project planning, design, loading analysis, technical advice and method statements. Erection, dismantle of scaffolding project as well as provision of risk assessments F5 certificate are also available.

The company is accredited with certifications of ISO 9001 Quality Management System, ISO 14001 Environmental Management System and OHSAS 18001 Occupational Health and Safety Management System. Genuine Treasure's scaffolding products are tested under the loading standard by recognized laboratory centre in Hong Kong to ensure reliable quality. With sufficient supply and the provision of our professional services, we have received valuable recognition and support from our esteemed clients. Our products and services are widely applied in a variety of civil engineering / foundation project, building construction, as well as interior and exterior decoration / refurbishment work.

During the past few years, Genuine Treasure has the honour to work with the leading corporations and participated in many major construction projects, including the MTR extension line, Guangzhou-Shenzhen-Hong Kong XRL (Hong Kong section), landmark hotel of 60 storeys high, transfer plate of high-rise building, interior/ exterior scaffolding platform, West Kowloon Cultural District, ceiling platform for theme park and other various types of major projects.

With the perseverance of all company members and the support by the Group, Genuine Treasure is committed to continuously offer all of our valued clients with environmental-friendly, cost effective, operational efficient and safe products and services, and to become a major scaffolding services company in Hong Kong.



俊川棚架設備有限公司(註冊分包商編號:R008578)

是俊川集團旗下，一家專門從事租賃、搭建金屬棚架設備的供應及承建商，同時更銷售各類建築鐵模及鋁模、配件及材料。

一直以來，本公司不斷努力改進，務求進一步提高公司水準，我們充份了解客戶面對當今市場的迅變及挑戰。**公司的宗旨是以客為本**，務求提供安全可靠、專業、高質、高效、具競爭力的服務和產品給我們專貴的客戶，我們具備各項多元化的金屬棚架工程服務，包括項目規劃、設計、負載力學分析、技術建議及設計方案，承接搭拆工程，並可提供安全工業棚架的F5表格。

俊川已通過ISO 9001質量管理體系認證、ISO 14001環境管理認證及OHSAS 18001職安健管理系統。俊川之金屬棚架設備產品通過香港認可實驗室負載力學測試認證，品質可靠，貨源充足，其質量、設計連同我們專業的服務，均得到各尊貴客戶的認同和支持。產品普遍用於各類型大小土木基礎建設工程、大樓建造及室內/外裝飾工程等，過往數年集團很榮幸能參與多項知名棚架工程項目，包括港鐵延綫、廣深港高鐵香港段、屯門赤鱗角大橋連線、港珠澳大橋人工島高架路、60多層高地標酒店、新型高層大樓轉力層、西九龍文化區、主題公園酒店內/外牆及天花工作台，以及各類主要工程。憑著全體人員努力不懈，以及集團大力支持，俊川承諾將繼續致力提供兼備環保、專業、高質、高效、具競爭力的服務和產品給我們所有的尊貴客戶，並成為香港一間主要的棚架服務公司。





■ **Scaffolding and falsework System Design**

金屬棚架系統方案設計

■ **Rental of Scaffolding Equipment**

金屬棚架設備租賃服務

■ **Selling Scaffolding Components**

金屬棚架及配件銷售

■ **Scaffolding Installation and Disassembly**

棚架裝拆及檢查服務

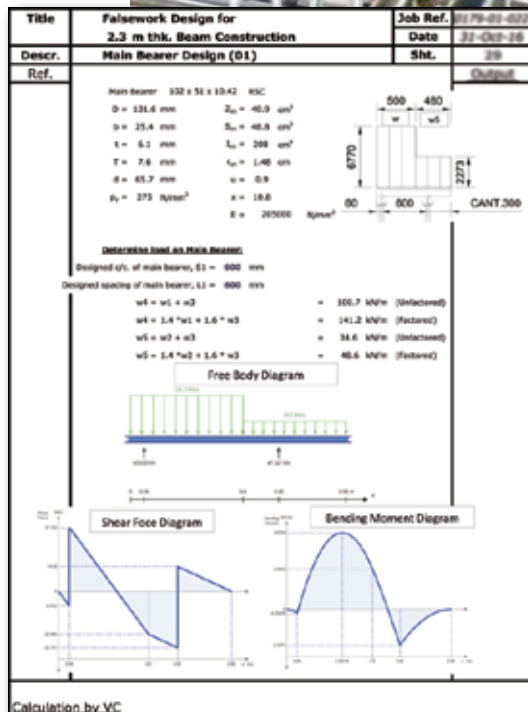
■ **Statutory certification (Issue Form 5)**

簽發表格5

Scaffolding and falsework System Design

金屬棚架系統方案設計

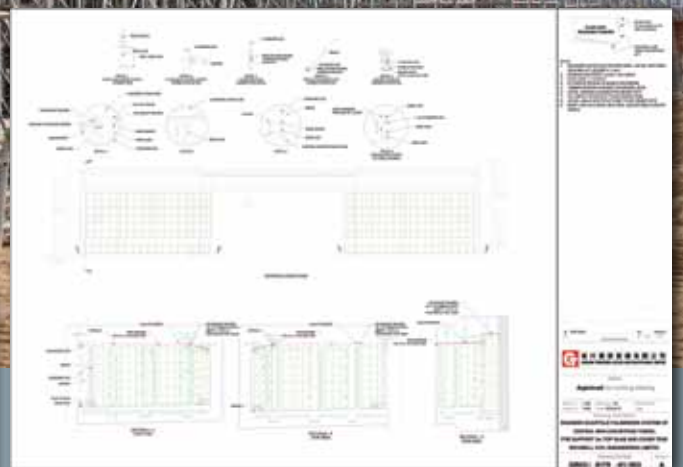
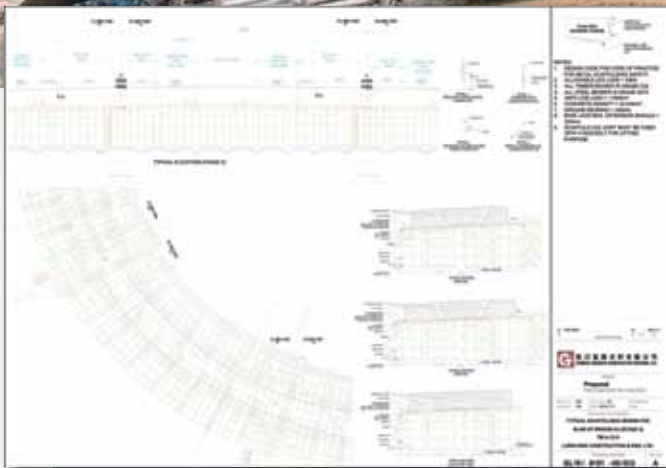
Applied advance computerized structural design software incorporate with on-site implementation plan
應用先進電腦結構分析軟體設計及配合現場施工方案



Floor Load Design and
Materials Mechanics Calculation
樓面負載及材料力學計算



SCAFFOLDING SERVICE 金屬棚架業務



Advanced Cad and
Structural Analysis Design
電腦結構分析軟件設計

SCAFFOLDING SERVICE 金屬棚架業務

Rental of Scaffolding Equipment

金屬棚架設備租賃服務



Selling Scaffolding Components

金屬棚架及配件銷售



SCAFFOLDING SERVICE 金屬棚架業務



Scaffolding Installation
and Disassembly

棚架裝拆及檢查服務



Statutory certification (Issue Form 5)

簽發表格5





■ **Metal Scaffolding**
金屬棚架

■ **GT Rounder System Scaffold**
俊川盤棚架系統



Metal scaffolding

Metal scaffolding offer major advances in environmental protection, complete adaptability, high strength-to-weight ratio and all at cost effective prices.

With special designed Rounder Scaffold System, assembly is quick and easy, usually all accessory items are positioned and attached in minutes. Assuring well-perform in all site conditions.

With the increasing demand in metal scaffolding, we have set up our scaffolding fabrication factory which is equipped with MIG & TIG welding machines and other specialized Fabricating Equipments to carry out manufacturing of metal scaffolding products.



金屬棚架

金屬棚架提倡環保、完美的適應性、高強度承重比等重大進展並合為成本效益的價格。

而獨特設計的俊川菊頭棚架系統，安裝快速容易，定位和連接所有配件一般僅需數分鐘，在所有工程環境中都保證有良好表現。

隨著金屬棚架需求的持續增加，我們的製造工廠已配置了MIG和TIG焊接機等專業設備去進行金屬棚架製品生產。



GT Rounder System Scaffold

Is a proven multi-purpose scaffold system specially designed to meet a wide range of structural and environmental needs for contemporary construction, which can be used for all form of access scaffold and structural falsework in the building and construction industries as well as construction and industrial maintenance works.

俊川盤棚架系統

是一套已獲確認能適應廣泛的現代化建築結構工程和環境需要而專門設計的多用途棚架系統。它能充當建築行業內各類建築地盤及工程的通道棚架和結構承重金屬棚架的需求，以至建築及工業維護工作。



Genuine Treasure Scaffold System 俊川棚架系統方案



External / Internal Working Platform
大型室外/外牆工作棚架運用

Falsework for Non-Regular and Complex Structure Construction
多變動複雜結構建造支撐運用

Heavy Duty Shoring
高承重型支撐運用

Access Platform and Stair Tower
高層施工上落通道及樓梯運用

System Formwork Support and Back-propping
系統模板支撐及回頂運用

General Shoring
一般承托

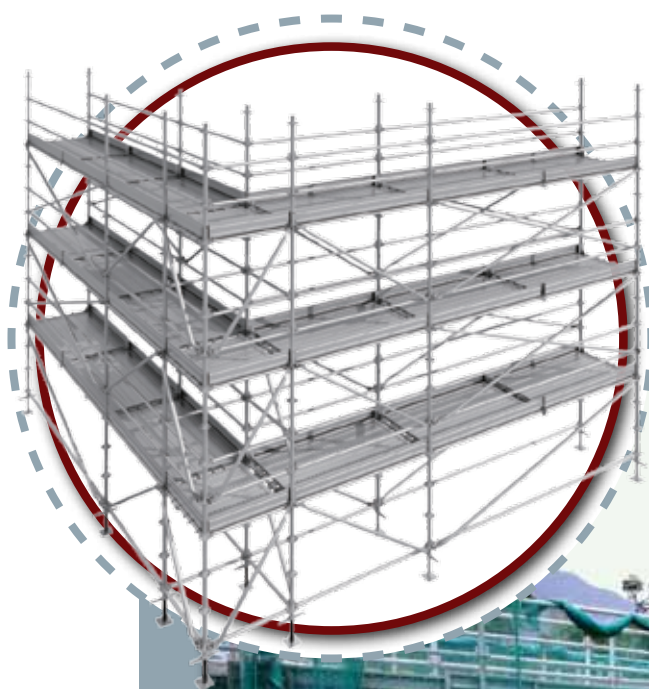


GT Scaffold System Design

Genuine Treasure also undertakes design, sales, Installation and Disassembly services for scaffolding systems.

俊川棚架系統的設計方案

為配合各客戶的工程需求，俊川亦同時提供棚架系統的設計方案，銷售，金屬棚架裝拆等服務。

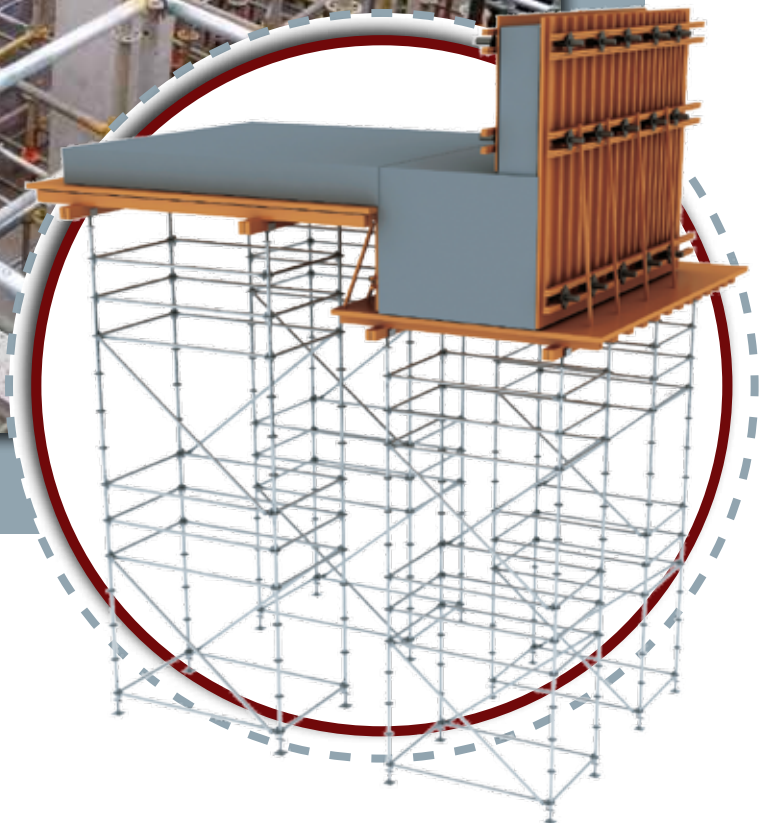


External / Internal Working Platform

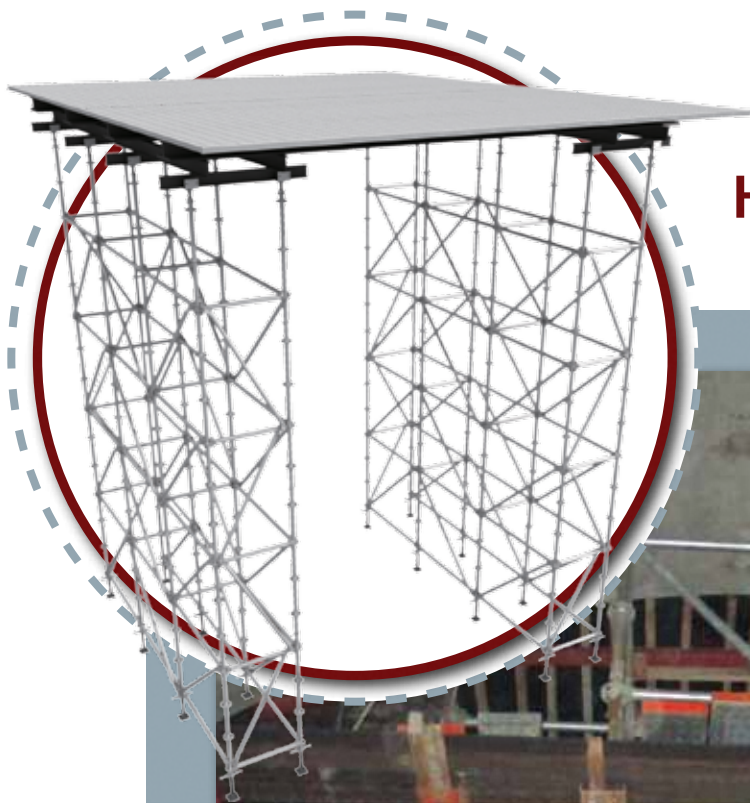
大型室外/外牆工作棚架運用



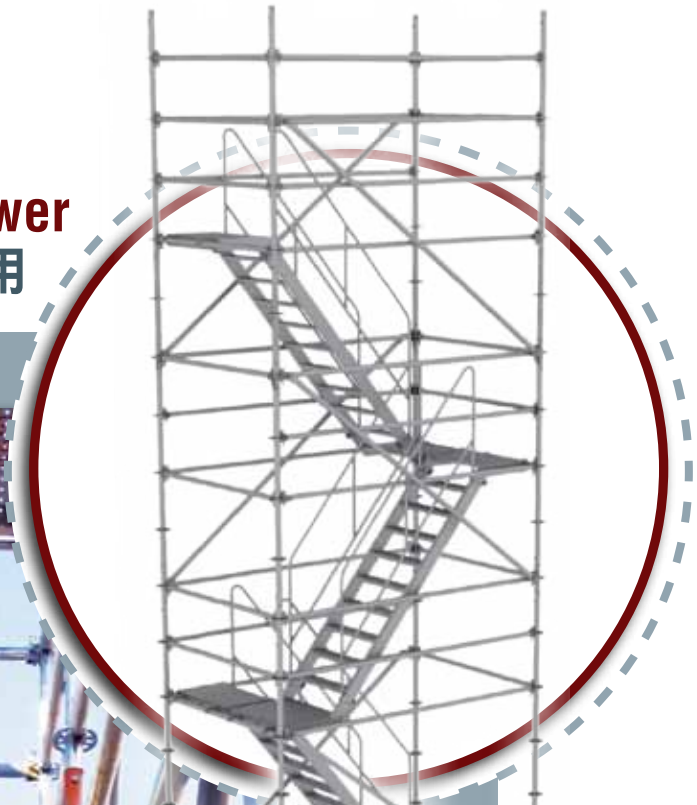
Falsework for Non-Regular and Complex Structure Construction 多變動複雜結構建造支撐運用



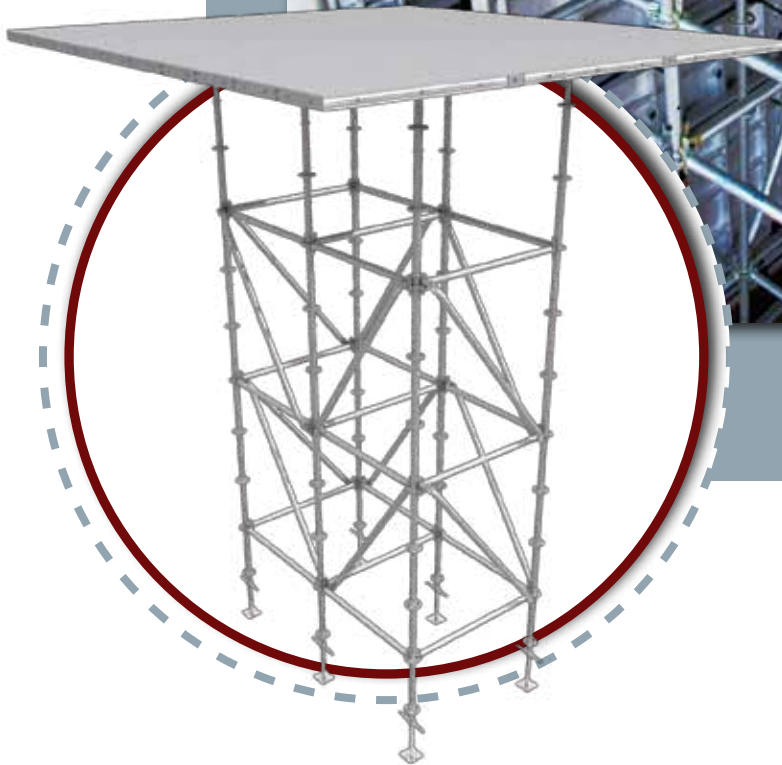
Heavy Duty Shoring
高承重型支撐運用



Access Platform and Stair Tower
高層施工上落通道及樓梯運用



System Formwork Support and Back-propping 系統模板支撐及回頂運用



General Shoring 一般承托



SCAFFOLD PARTS 標準部件

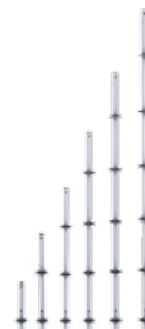


Rounder Standard	直杆
Rounder Ledger	橫杆
Rounder Diagonal Brace	斜杆
Rounder Head Jack	頂積
Rounder Base Jack	底積
Rounder Base Sleeve Short	腳套
Rounder Joint	駁心
Catwalk 300/500	鈎板300/500系列
Toe-Board	踢腳板
Scaffold Rolling Wheel	通架輪子
Medium Catwalk Bearer	中承杆
Toe Board Connector	踢腳板連接碼
Double Coupler	雙手扣
Walkway Bracket	九比架
Wall Ties Connector	連牆器
Aluminum Stair	鋁梯

SCAFFOLD PARTS 標準部件

Rounder Standard 直杆 (Dim. 48.3Ø x 3.2mm thickness)

Product Code 編碼	Specification 規格 L(mm)	Weight (kg/unit) 重量 (千克/支)
RS010500	500	2.23
RS010750	750	3.57
RS011000	1000	4.46
RS011250	1250	5.80
RS011500	1500	6.69
RS012000	2000	8.92
RS012500	2500	11.15
RS013000	3000	13.38



Rounder Ledger 橫杆 (Dim. 48.3Ø x 3.2mm thickness)

Product Code 編碼	Specification 規格 L(mm)	Weight (kg/unit) 重量 (千克/支)
RS020300	300	1.68
RS020400	400	2.04
RS020600	600	2.75
RS020900	900	3.82
RS021200	1200	4.88
RS021500	1500	5.95
RS021829	1829	7.12
RS022400	2400	9.15
RS023658	3658	13.63



Rounder Diagonal Brace 斜杆 (Dim. 48.3Ø x 3.2mm thickness)

Product Code 編碼	Specification 規格 L=X x Y(mm)	Weight (kg/unit) 重量 (千克/支)
RS100600	1095=1000 x 600	5.60
RS100900	1248=1000 x 900	6.31
RS101200	1448=1000 x 1200	7.02
RS101500	1678=1000 x 1500	7.70
RS101829	1952=1000 x 1829	8.60
RS102400	2459=1000 x 2400	10.40
RS103658	3645=1000 x 3658	14.9
RS150600	1565=1500 x 600	7.44
RS150900	1676=1500 x 900	7.83
RS151200	1829=1500 x 1200	8.38
RS151500	2016=1500 x 1500	9.04
RS151829	2249=1500 x 1829	9.87
RS152400	2702=1500 x 2400	11.30
RS153658	3813=1500 x 3658	15.5
RS200600	2049=2000 x 600	9.16
RS200900	2135=2000 x 900	9.46
RS201200	2257=2000 x 1200	9.90
RS201500	2411=2000 x 1500	10.45
RS201829	2610=2000 x 1829	11.15
RS202400	3008=2000 x 2400	12.57
RS203658	4036=2000 x 3658	16.23



SCAFFOLD PARTS 標準部件

Rounder Head Jack 頂積

Product Code 編碼	Specification 規格 H(mm)	Weight (kg/unit) 重量 (千克/個)
RS0316B6	兩用，Ø34 x 600	4.50
RS0336BH	單用，Ø38 x 600	4.40



Rounder Base Jack 底積

Product Code 編碼	Specification 規格 H(mm)	Weight (kg/unit) 重量 (千克/個)
RS0316H6	兩用，Ø34 x 600	4.20
RS0336HH	單用，Ø38 x 600	3.90



Rounder Base Sleeve Short 腳套

Product Code 編碼	Specification 規格 H(mm)	Weight (kg/unit) 重量 (千克/個)
RS03B235	235	1.41



Rounder Joint 駁心

Product Code 編碼	Specification 規格 H(mm)	Weight (kg/unit) 重量 (千克/個)
RS03550R	550 — Round 圓形	1.51
RS03550S	550 — Square 方形	1.35
RS03250S	330 — Square 方形	1.03



Catwalk 鈎板300/500系列

Product Code 編碼	Specification 規格 L x W x D (mm)	Weight (kg/unit) 重量 (千克/塊)
RS046030	600 x 300 x 50	5.65
RS049030	900 x 300 x 50	7.22
RS041230	1200 x 300 x 50	9.39
RS041530	1500 x 300 x 50	11.56
RS041830	1829 x 300 x 50	13.89
RS046050	600 x 500 x 50	8.99
RS049050	900 x 500 x 50	12.48
RS041250	1200 x 500 x 50	15.26
RS041550	1500 x 500 x 50	18.75
RS041850	1829 x 500 x 50	22.50



Toe-Board 踢腳板

Product Code 編碼	Specification 規格 L x W (mm)	Weight (kg/unit) 重量 (千克/塊)
RS050600	600 x 200	3.39
RS050900	900 x 200	4.85
RS051200	1200 x 200	6.31
RS051500	1500 x 200	7.97
RS051829	1829 x 200	9.58



SCAFFOLD PARTS 標準部件

Toe Board Connector 踢腳板連接碼

Product Code 編碼	Specification 規格 L(mm)	Weight (kg/unit) 重量 (千克/個)
RS03T200	踢腳板連接碼	1.09



Medium Catwalk Bearer 中承杆

Product Code 編碼	Specification 規格 L(mm)	Weight (kg/unit) 重量 (千克/個)
RS060900	900	4.88
RS061200	1200	5.59



Scaffold Rolling Wheel 通架輪子

Product Code 編碼	Specification 規格 (inch)	Weight (kg/unit) 重量 (千克/個)
RS06SW6A	6 inch Wheel 6吋輪子	6.50
RS06SW8A	8 inch Wheel 8吋輪子	8.40



Double Coupler 雙手扣

Product Code 編碼	Specification 規格 L(mm)	Weight (kg/unit) 重量 (千克/個)
RS07001	48 x 48 Fix	0.9
RS07002	48 x 48 Swivel	1.0



Walkway Bracket 九比架

Product Code 編碼	Specification 規格 L(mm)	Weight (kg/unit) 重量 (千克/個)
RS0660BK	500	6.0
RS0650BK	600	6.7



Wall Ties Connector 連牆器

Product Code 編碼	Specification 規格 (mm)	Weight (kg/unit) 重量 (千克/個)
RS0348WC	連牆器	0.46



Scaffold Stair 樓梯

Product Code 編碼	Specification 規格 L x H x W (mm)	Weight (kg/unit) 重量 (千克/條)
RS061820	1829 x 2000 x 500 (Steel 鐵梯)	27.00
RS06A242	2400 x 2000 x 680 (Aluminum 鋁梯)	56.00



GT ROUNDER CAPACITY 俊川盤棚架承載力



GT ROUNDER CAPACITY 俊川盤棚架承載力

Genuine Treasure Scaffolding System makes an ideal propping system:

Being both a scaffolding and a propping system it is economic and versatile;
It has extremely high strength capacity values, is self supporting and is quick to install.

Allround in standard testing configuration up to 7 meters in height is rated for the following permissible loadings:

With ledger lifts of 2.0 metres interval – up to 40kN per standard;
With ledger lifts of 1.5 metres interval – up to 50kN per standard;
With ledger lifts of 1.0 metres interval – up to 60kN per standard.
(All above safety factor 1.6)

Permissible loadings can be increased considerably further by:

Using reinforced base jacks and head jacks (U-heads);
Additional bracing (ledgers and diagonals), and/or;
Joining standards with our unique twin wedge couplers.
Appropriate static calculations should be performed to prove the appropriate configuration of Rounder components for each individual situation.

俊川棚架系統是一套理想的支撐系統:

其應用於棚架工程及支撐系統，是一套價格相宜及多用途的系統；
另外，其材質及強度乘載力極高，安裝時間短

全方位標準配置測試高達7米，相對承重如下:

橫杆安裝於2.0米高間距 — 可承載重量高達 40kN；
橫杆安裝於1.5米高間距 — 可承載重量高達 50kN；
橫杆安裝於1.0米高間距 — 可承載重量高達 60kN。
(安全系數為 1.6)

當配合以下部件運用，俊川棚架的承重量可進一步提升:

採用增強的底積及頂積 (U頂)；
附加支撐 (橫杆及斜杆)；及/或；
以俊川獨有的雙手扣連接部件。
俊川會為每個客戶進行合適的計算，配合俊川的標準配置，
以符合各種不同施工環境的要求。

■ Anderson Road Footbridge and Associated Lift Towers 安達臣道行人天橋及相關升降機塔



2015 – 2016 Lam Construction 林氏建築

- Rental of metal scaffolding materials 提供金屬棚架租賃服務 /
Sub-contract for Erection & Dismantle of metal scaffolding (materials with service)
承包金屬棚架搭拆工程 (連工包料)
- Access Platform and Stair Tower 高層施工上落通道及樓梯運用 /
External / Internal Working Platform 大型室外/外牆工作棚架運用 /
Falsework for Non-Regular and Complex Structure Construction
多變動複雜結構建造工作台運用

■ Tuen Mun - Chek Lap Kok (Seagull Pier) 屯門赤鱗角 (海鷗柱)



2015 – 2017 Gammon Construction Ltd 金門建築有限公司

- Rental of metal scaffolding materials 提供金屬棚架租賃服務 /
- Heavy Duty Shoring 高承重型支撐運用 /
- Access Platform and Stair Tower 高層施工上落通道及樓梯運用 /
- System Formwork Support and Back-propping 系統範本支撐及回頂運用 /
- External / Internal Working Platform 大型室外/外牆工作棚架運用 /
- Falsework for Non-Regular and Complex Structure Construction
多變動複雜結構建造工作台運用 /
- General Shoring 一般承托





■ Hong Kong-Zhuhai-Macau Bridge - Scenic Hill Tunnel Ventilation Building 港珠澳大橋工程 - 觀景山隧道通風大樓

2015 – 2017

China State Construction Engineering (Hong Kong) Limited
中國建築工程(香港)有限公司

- Sub-contract for Erection & Dismantle of metal scaffolding (materials with service)
承包金屬棚架搭拆工程 (連工包料)
- Access Platform and Stair Tower 高層施工上落通道及樓梯運用 / External / Internal Working Platform 大型室外/外牆工作棚架運用



■ XRL Contract 823B - Shek Kong Stabling Sidings & Emergency Rescue Sidings 高鐵建造合約編號823B - 石崗列車停放處及緊急救援處



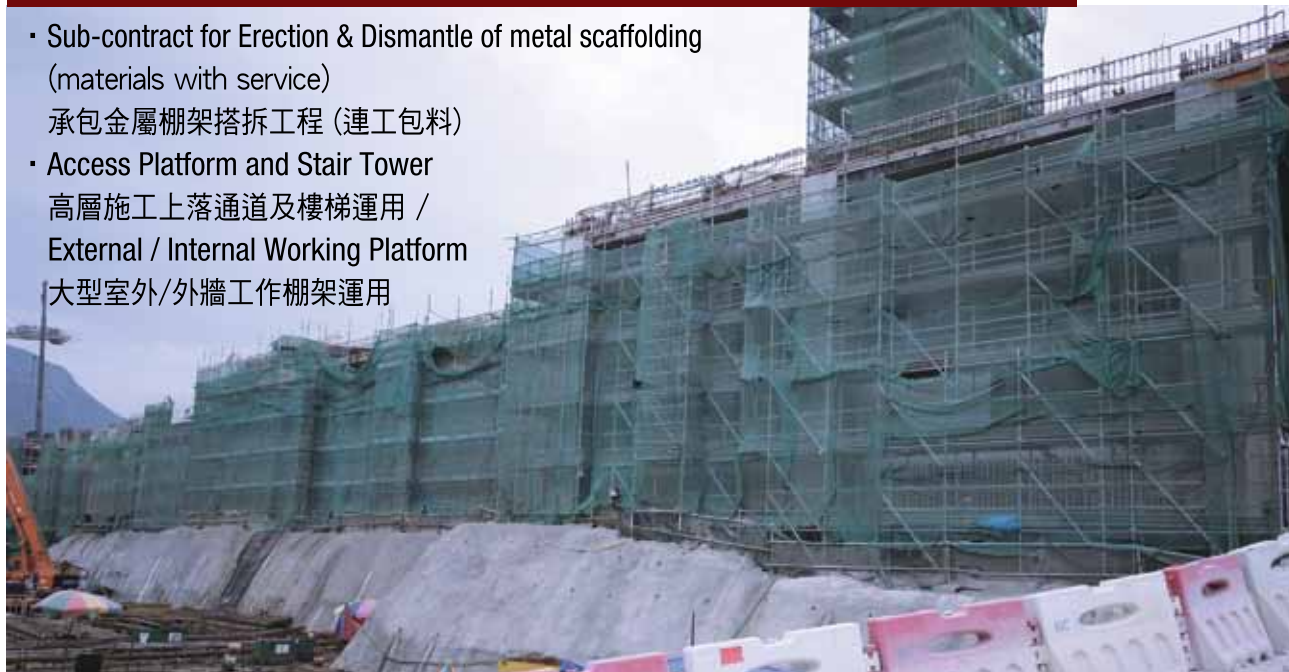
2012 – 2014 Maeda-China State JV 前田-中國建築聯營

- Rental of metal scaffolding materials 提供金屬棚架租賃服務 /
Sub-contract for Erection & Dismantle of metal scaffolding (materials with service)
承包金屬棚架搭拆工程 (連工包料)
- Heavy Duty Shoring 高承重型支撐運用 /
Access Platform and Stair Tower 高層施工上落通道及樓梯運用 /
System Formwork Support and Back-propping 系統範本支撐及回頂運用 /
External / Internal Working Platform 大型室外/外牆工作棚架運用 /
Falsework for Non-Regular and Complex Structure Construction
多變動複雜結構建造工作台運用 /
General Shoring 一般承托

■ MTR 908 - Wong Chuk Hang Depot Superstructure 港鐵合約908號 - 黃竹坑鐵路維修車廠

2013 – 2014 Hsin Chong Group Holdings Limited 新昌集團控股有限公司

- Sub-contract for Erection & Dismantle of metal scaffolding
(materials with service)
承包金屬棚架搭拆工程 (連工包料)
- Access Platform and Stair Tower
高層施工上落通道及樓梯運用 /
External / Internal Working Platform
大型室外/外牆工作棚架運用



■ OK Mall Shek Mun 石門安群街

2015 – 2016

Hien Lee Engineering Co Ltd 顯利工程有限公司

- Sub-contract for Erection & Dismantle of metal scaffolding (materials with service)
承包金屬棚架搭拆工程 (連工包料)
- Access Platform and Stair Tower
高層施工上落通道及樓梯運用 /
External / Internal Working Platform
大型室外/外牆工作棚架運用 /
Falsework for Non-Regular and
Complex Structure Construction
多變動複雜結構建造工作台運用



■ Hong Kong Themed Park H3 Hotel 香港主題公園 H3 酒店

2015 – 2016 Ming Tai Construction Engineering Co Ltd 明泰建築工程有限公司
Paul Y. Construction Co Ltd 保華建築有限公司

- Rental of metal scaffolding materials 提供金屬棚架租賃服務 /
Sub-contract for Erection & Dismantle of metal scaffolding (materials with service)
承包金屬棚架搭拆工程 (連工包料)
- Access Platform and Stair Tower 高層施工上落通道及樓梯運用 /
System Formwork Support and Back-propping 系統範本支撐及回頂運用 /
External / Internal Working Platform 大型室外/外牆工作棚架運用 /
Falsework for Non-Regular and Complex Structure Construction 多變動複雜結構建造工作台運用 /
General Shoring 一般承托



JOB REFERENCE 工程項目

■ New World Centre Re-development 新世界中心重建項目

2015 – 2016 Ming Tai Construction Engineering Co Ltd 明泰建築工程有限公司
New World Construction Co Ltd 新世界建築有限公司



■ M+ Muesum M+ 博物館

2015 – 2017 Ming Tai Construction Engineering Co Ltd 明泰建築工程有限公司
Hsin Chong Group Holdings Limited 新昌集團控股有限公司



- Rental of metal scaffolding materials 提供金屬棚架租賃服務 /
Sub-contract for Erection & Dismantle of metal scaffolding (materials with service) 承包金屬棚架搭拆工程 (連工包料)
- Heavy Duty Shoring 高承重型支撐運用 /
Access Platform and Stair Tower 高層施工上落通道及樓梯運用 /
System Formwork Support and Back-propping 系統範本支撐及回頂運用 /
External / Internal Working Platform 大型室外/外牆工作棚架運用 /
Falsework for Non-Regular and Complex Structure Construction 多變動複雜結構建造工作台運用 /
General Shoring 一般承托

■ MTR 1109 - Sung Wong Toi & To Kwa Wan Tunnels 港鐵合約1109號 - 宋皇臺及土瓜灣隧道

2014 – 2017 Hsin Chong - Samsung JV 三星新昌聯合

- Rental of metal scaffolding materials 提供金屬棚架租賃服務 /
Sub-contract for Erection & Dismantle of metal scaffolding (materials with service)
承包金屬棚架搭拆工程 (連工包料)
- Heavy Duty Shoring 高承重型支撐運用 /
Access Platform and Stair Tower 高層施工上落通道及樓梯運用 /
System Formwork Support and Back-propping 系統範本支撐及回頂運用 /
External / Internal Working Platform 大型室外/外牆工作棚架運用 /
Falsework for Non-Regular and Complex Structure Construction
多變動複雜結構建造工作台運用 /
General Shoring 一般承托



■ Liantang / Heung Yuen Wai Boundary Control Point 蓮塘 / 香園圍口岸

2015 – 2016 Hong Kee (Asia) Limited 康記亞洲有限公司

Chun Wo Development Holdings Limited 俊和發展集團有限公司

- Rental of metal scaffolding materials 提供金屬棚架租賃服務 /
- Heavy Duty Shoring 高承重型支撐運用 /
- Access Platform and Stair Tower 高層施工上落通道及樓梯運用 /
- External / Internal Working Platform 大型室外/外牆工作棚架運用 /
- Falsework for Non-Regular and Complex Structure Construction
- 多變動複雜結構建造工作台運用 /
- General Shoring 一般承托





JOB REFERENCE 工程項目

■ Central-Wan Chai Bypass 中環灣仔繞道

2014 – 2017

Richwell Engineering Limited 顯豐工程有限公司

Hong Kee (Asia) Limited 康記亞洲有限公司

China State Construction Engineering (Hong Kong) Limited 中國建築工程(香港)有限公司

Chun Wo Development Holdings Limited 俊和發展集團有限公司

- Rental of metal scaffolding materials 提供金屬棚架租賃服務 /
- Heavy Duty Shoring 高承重型支撐運用 /
Access Platform and Stair Tower 高層施工上落通道及樓梯運用 /
Falsework for Non-Regular and Complex Structure Construction 多變動複雜結構建造工作台運用 /
General Shoring 一般承托



■ XRL Contract 810A - West Kowloon Terminus Station North 高鐵建造合約編號810A-西九龍總站(北)



2015 – 2017 Gammon – Leighton JV 金門禮頓聯營

- Rental of metal scaffolding materials 提供金屬棚架租賃服務 /
- Heavy Duty Shoring 高承重型支撐運用 /
Access Platform and Stair Tower 高層施工上落通道及樓梯運用 /
External / Internal Working Platform 大型室外/外牆工作棚架運用
Falsework for Non-Regular and Complex Structure Construction 多變動複雜結構建造工作台運用 /
General Shoring 一般承托

GROUP JOB REFERENCE 集團工程項目

GROUP JOB REFERENCE 集團工程項目

External / Internal and Ceiling Working Platform 內/外牆棚架及天花工作台

Tuen Mun Area 54 Sewage Treatment Works	屯門54區污水處理廠
Tuen Mun Highway	屯門公路
Lohas Park Phase 3	日出康城3期
Pak Ngau Shek Sewage Treatment Works	白牛石污水處理廠
OK Mall Shek Mun	石門廣場
Shek Wu Hui Sewage Treatment Works	石湖墟污水處理廠
Tolo Highway - Road Widening	吐露港公路擴闊工程
Development of Anderson Road - Footbridge D & Associated Works	安達臣道發展項目 - 行人天橋D及相關工程
Chek Lap Kok (Seagull Pier)	赤鱗角(海鷗柱)
She Shan Tsuen Sewage Treatment Works	社山村污水處理廠
Sinopec Oil Terminal - Tsing Yi	青衣中石化油站
Miramar Shopping Centre	美麗華購物中心
YMCA Yau Ma Tei	油麻地香港中華基督教青年會
Hong Kong Themed Park	香港主題公園
Hong Kong Themed Park H3 Hotel	香港主題公園H3酒店
Tai Hang Sewage Treatment Works	泰亨污水處理廠
Tsuen Wan West Station	荃灣西站
XRL Contract 810A - West Kowloon Terminus Station North	高鐵建造合約編號810A - 西九龍總站(北)
XRL Contract 810B - West Kowloon Terminus Station South	高鐵建造合約編號810B - 西九龍總站(南)
XRL Contract 823A - Tai Kong Po to Tse Uk Tsuen Tunnels	高鐵建造合約編號823A - 大江埔至謝屋村隧道
XRL Contract 823B - Shek Kong Stabling Sidings & Emergency Rescue Sidings	高鐵建造合約編號823B - 石崗列車停放處及緊急救援處
Ma Po Mei Sewage Treatment Works	麻布尾污水處理廠
Hong Kong-Zhuhai-Macau Bridge	港珠澳大橋
MTR 908 - Wong Chuk Hang Depot Superstructure	港鐵合約908號 - 黃竹坑鐵路維修車廠
Liantang Boundary Control Point	蓮塘口岸

External / Internal and Ceiling Working Platform 內/外牆棚架及天花工作台

Lung Ping Road	龍坪道地基平整工程
Diamond Hill MTR Station	鑽石山地鐵站
Hong Kong International School Lower Primary School Redevelopment	香港國際學校小學部重建項目

Civil Engineering Project 土木工程項目

Central-Wan Chai Bypass (North Point Section)	中環灣仔繞道 (北角路段)
Central-Wan Chai Bypass	中環灣仔繞道
Tuen Mun Area 54 Sewage Treatment Works	屯門54區污水處理廠
Tuen Mun Highway	屯門公路
Pak Ngau Shek Sewage Treatment Works	白牛石污水處理廠
Shek Wu Hui Sewage Treatment Works	石湖墟污水處理廠
Tolo Highway - Road Widening	吐露港公路擴闊工程
Development of Anderson Road - Footbridge D & Associated Works	安達臣道發展項目 - 行人天橋D 及相關工程
Chek Lap Kok (Seagull Pier)	赤鱗角 (海鷗柱)
Southern Connection of TM-CLKL	赤鱗角南面連接路高架路段
She Shan Tsuen Sewage Treatment Works	社山村污水處理廠
The University of Hong Kong	香港大學
Tai Hang Sewage Treatment Works	泰亨污水處理廠
XRL Contract 810A - West Kowloon Terminus Station North	高鐵建造合約編號810A - 西九龍總站(北)
XRL Contract 810B - West Kowloon Terminus Station South	高鐵建造合約編號810B - 西九龍總站(南)
XRL Contract 823A - Tai Kong Po to Tse Uk Tsuen Tunnels	高鐵建造合約編號823A - 大江埔至謝屋村隧道
XRL Contract 823B - Shek Kong Stabling Sidings & Emergency Rescue Sidings	高鐵建造合約編號823B - 石崗列車停放處及緊急救援處
Underground storage tank at Shum Shui Po	深水埗地下儲水箱
Ma Po Mei Sewage Treatment Works	麻布尾污水處理廠
Hong Kong-Zhuhai-Macau Bridge	港珠澳大橋

Civil Engineering Project 土木工程項目

MTR 1109 - Sung Wong Toi & To Kwa Wan Tunnels	港鐵合約1109號 - 宋皇臺及土瓜灣隧道
MTR 820 - Mei Lai Road to Hoi Ting Road Tunnels	港鐵合約820號 - 美荔道至海庭道隧道
MTR 908 - Wong Chuk Hang Depot Superstructure	港鐵合約908號 - 黃竹坑鐵路維修車廠
MTR KTE 1001 - Yau Ma Tei to Whampoa Tunnels and Ho Man Tin Station	港鐵合約觀塘延綫 1001 - 油麻地至黃埔隧道及何文田站工程
Whampoa MTR Station	黃埔地鐵站
Liantang Boundary Control Point	蓮塘口岸
Butterfly Valley Reservoir	蝴蝶谷水塘
Lung Ping Road Site Formation Works	龍坪道地基平整工程
MTR (Shatin-Central Link) Diamond Hill Station	港鐵沙中綫鑽石山站

Building Construction Project 大樓建造工程項目

M+ Muesum	M+ 博物館
Un Chau Street / Hing Wah Street / Castle Peak Road (K21) Project (Heya Crystal)	元州街 / 興華街 / 青山道 (K21) 項目 (喜薈)
Barbecue Gardens Tuen Mun	屯門聽濤村
Lohas Park Phase 3	日出康城3期
Tanner Hill Estate at North Point	北角丹拿花園
Mount Nicholson, Stubbs Road	司徒拔道聶歌信山豪宅項目
OK Mall Shek Mun	石門廣場
The Bloomsway, Cafeteria Beach	咖啡灣湖名山
Residential Project at Kadoorie Hill, Mong Kok	旺角加多利山豪宅發展項目
Comprehensive development of Oil Street	油街發展項目
Tsing Yi Logistics Center	青衣物流城
Tsing Yi Maritime Square Extension	青衣城擴建工程
Sai Yee Street Residential Project	洗衣街住宅項目
Science Park Phase 3	科學園第3期
Refurbishment of Murray Building	美利大廈翻新工程項目
Hong Kong Themed Park H3 Hotel	香港主題公園H3酒店
Tsuen Wan West Station	荃灣西站

Building Construction Project 大樓建造工程項目

HKA – New School Campus in Sai Kung	香港學堂 — 新西貢校舍
No2-6 Sha Tsui Road, Tsuen Wan, Office Building (The OCTAGON)	荃灣沙咀道2-6號商業發展工程 (嘉達環球中心)
Residential Development at No 873, Lai Chi Kok Road (One Kowloon West)	荔枝角道873號住宅項目 (一號·西九龍)
Kai Tak Residential Development	啟德住宅項目
Residential Project at No 1 Castle Road, Caine Road	堅道衛城道1號住宅項目
Tseung Kwan O TL126 O'South	將軍澳住宅項目 - 澳南
Lin Shing Road Public Housing	連城道公營房屋
New World Centre Re-development	新世界中心重建項目
Jessville, 128 Po Fu Lam	薄扶林譚雅士大宅
Jaffe Road	謝菲道
Chai Wan VTC	柴灣職業訓練局
No52-56 Tsun Yip Street, Kwun Tong, Office Building	觀塘駿業街52-56號商業大廈
South Lane Residential Project	南里1-3號住宅項目

Repairment & Refurbishment Project 維修及翻新工程項目

Tuen Mun Highway	屯門公路
Tanner Hill Estate at North Point	北角丹拿花園
Shek Kip Mei Estate Phase 6	石硤尾村第6期
Tolo Highway - Road Widening	吐露港公路擴闊工程
Chun Pin Street	圳邊街
Development of Anderson Road - Footbridge D & Associated Works	安達臣道發展項目 - 行人天橋D及相關工程
Cheung Sha Wan Wholesale Food Market	長沙灣副食品批發市場
Sinopec Oil Terminal - Tsing Yi	青衣中石化油站
Tsing Yi Maritime Square Extension	青衣城擴建工程
Refurbishment of Murray Building	美利大廈翻新工程項目
Miramar Shopping Centre	美麗華購物中心
YMCA Yau Ma Tei	油麻地香港中華基督教青年會

Repairment & Refurbishment Project 維修及翻新工程項目

Hong Kong Themed Park	香港主題公園
-----------------------	--------

Tseung Kwan O MTR Station	將軍澳港鐵站
---------------------------	--------

Tang Lung Street	登龍街
------------------	-----

Jessville, 128 Po Fu Lam	薄扶林譚雅士大宅
--------------------------	----------

Hong Kong International School Lower Primary School Redevelopment	香港國際學校 小學部重建項目
--	-------------------

Hong Kong International Airport	香港國際機場
---------------------------------	--------



俊川棚架設備有限公司
GENUINE TREASURE ACCESS AND SCAFFOLDING LTD

香港九龍觀塘成業街27號
日昇中心3樓306室

Unit 306, 3/F., Sunbeam Centre,
No. 27 Shing Yip Street, Kwun Tong,
Kowloon, Hong Kong

電話 Tel : (852) 2131 8185

傳真 Fax : (852) 2131 8184

電郵 E-mail : gt@g-t.com.hk

網址 Website : www.g-t.com.hk